

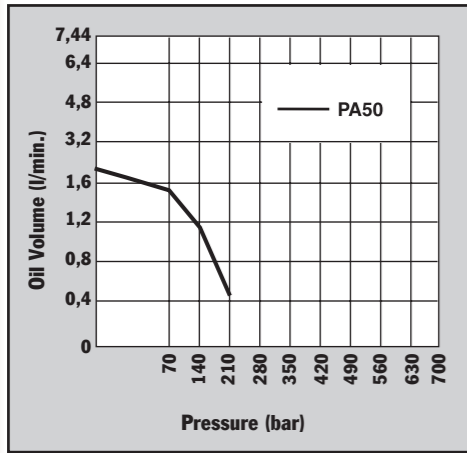
Air Pump

HYDRAULIC PA50 SERIES

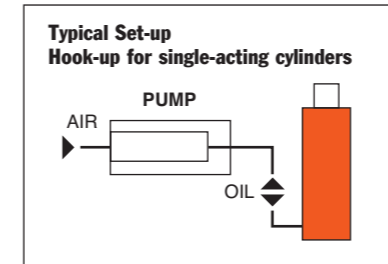
460 cm³/min.
Low Pressure

Single-speed, low pressure
(220 bar) output pumps.

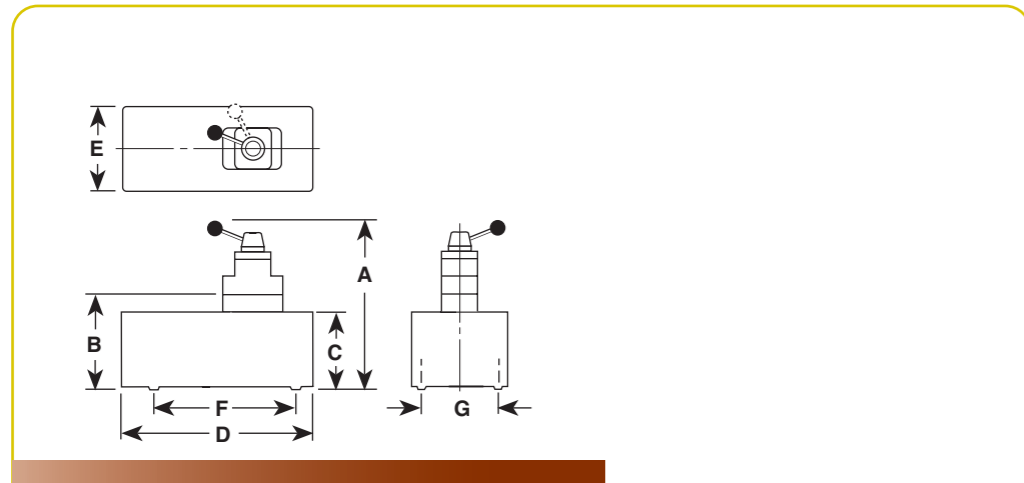
PUMPS



- Serviceable air motor for economical repair.
 - Air inlet filter protects motor. Filter in outlet port protects against contaminated systems.
 - Assorted reservoirs to suit your application's requirements.
- * input air port inside thread size 1/4"NPT



PUMPS



| Pump No. | A (mm) | B (mm) | C (mm) | D (mm) | E (mm) | F (mm) | G (mm) | Max. Pressure Output | | Oil Del. * (l/min) | | |
|---------------|--------|--------|--------|--------|--------|--------|-----------|----------------------|-------|--------------------|--------|---------|
| | | | | | | | | bar | 0 bar | 7 bar | 70 bar | 220 bar |
| PA50, PS50R | | | | | | | | 220 | 2,05 | 1,76 | 1,41 | 0,45 † |
| PA50M, PA50RM | 197 | 149 | 111 | 241 | 127 | — | 102 x 229 | 220 | 2,05 | 1,76 | 1,41 | 0,45 † |
| PA50R2 | 260 | 203 | 178 | 292 | 241 | — | 130 x 181 | 220 | 2,05 | 1,76 | 1,41 | 0,45 † |
| PA50D | 264 | 149 | 111 | 241 | 127 | 229 | 102 | 220 | 2,05 | 1,76 | 1,41 | 0,45 † |

* Typical delivery. Actual flow will vary with field conditions.
† PA50 Series measured at 220 bar.

| For use with Cyl. Type | Description | Order No. | Valve No. | Air Supply Req'd bar | Reservoir Cap. (l) | Reservoir Usable (l) | Oil Port (in) | Prod. Wt (kg) |
|---------------------------|---|-----------|-------------------|----------------------|--------------------|----------------------|---------------|---------------|
| Single-Acting | Base model pump with high density polyethylene reservoir. | PA50 | — | 3 - 8 | 1,7 | 1,6 | 3/8-NPTF | 6,4 |
| Single-Acting | PA50, except has metal reservoir. | PA50M | — | 3 - 8 | 1,7 | 1,6 | 3/8-NPTF | 7,3 |
| Single-Acting | PA50, except has 3.7 meter 12 foot remote control. | PA50R | — | 3 - 8 | 1,7 | 1,6 | 3/8-NPTF | 8,4 |
| Single-Acting | PA50R, except has metal reservoir. | PA50RM | — | 3 - 8 | 1,7 | 1,6 | 3/8-NPTF | 9,3 |
| Single-Acting | PA50R, except has 7.6 liter reservoir 2 gallon reservoir. | PA50R2 | — | 3 - 8 | 7,6 | 7,3 | 3/8-NPTF | 12,9 |
| Single- and Double Acting | PA50, except designed to operate either single- or double-acting systems. Valve function: Advance/Return. | PA50D | 9504, 3-way/4-way | 3 - 8 | 1,7 | 1,6 | 3/8-NPTF | 8,3 |

Notes: Air inlet port 1/4" NPTF. Requires 570 l at 7 bar shop air pressure at the pump.

